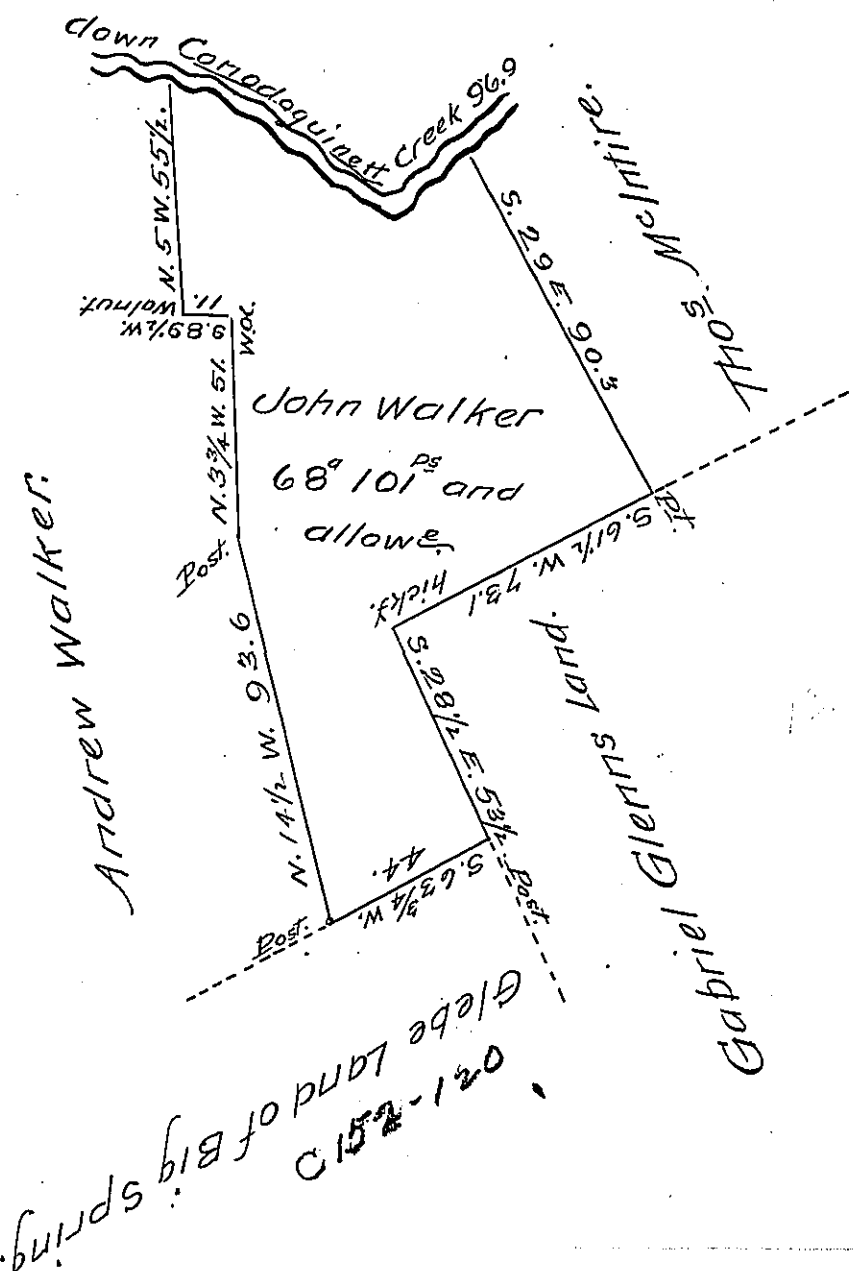


Courses & distances  
down Creek.

S. 67 1/2	E. 31 3/4
S. 37	E. 11
S. 56 3/4	E. 27
N. 50	E. 10
N. 45 1/4	E. 17.2
<hr/>	
96.9	

D-10 47



A Draught of a Tract of Land situate in Newton Township Cumbd. County Containing 68° 101 ps. and allowance of six & Cent for roads &c. Surveyed for John Walker in pursuance of a warrant dated the first day of June 1808 - July 15<sup>th</sup>. 1808.

To Sam<sup>l</sup>. Cochran Esq<sup>t</sup>. S.G. - W<sup>m</sup>. Wheeler D.S.

IN TESTIMONY that the above is a copy of the original remaining on file in the Department of Internal Affairs of Pennsylvania, made conformably to an Act of Assembly approved the 16th day of February, 1833, I have hereunto set my Hand and caused the Seal of said Department to be affixed at Harrisburg, this 10<sup>th</sup> day of May 1907.

*Henry Houck*  
Secretary of Internal Affairs.